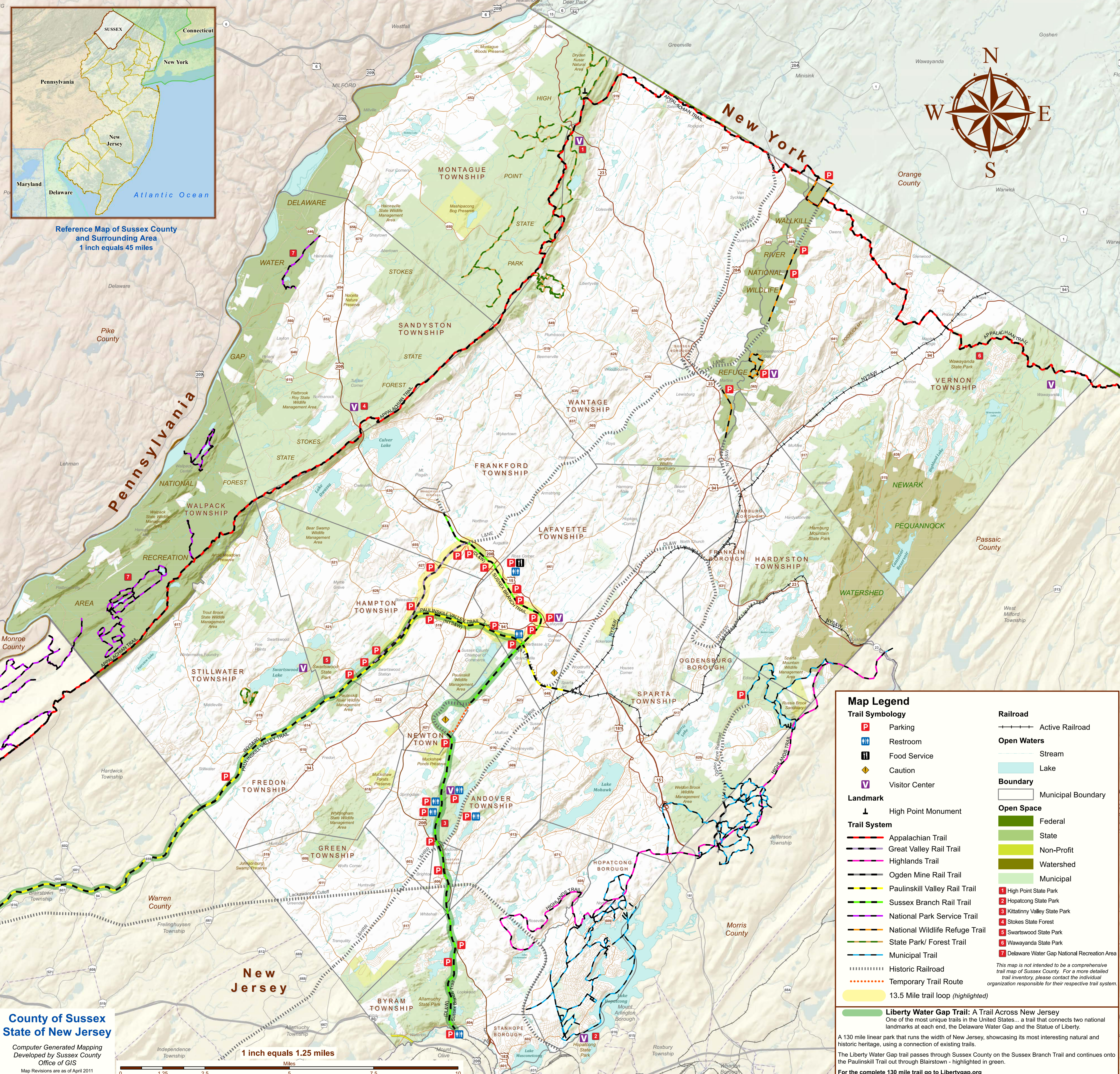




Reference Map of Sussex County and Surrounding Area
1 inch equals 45 miles



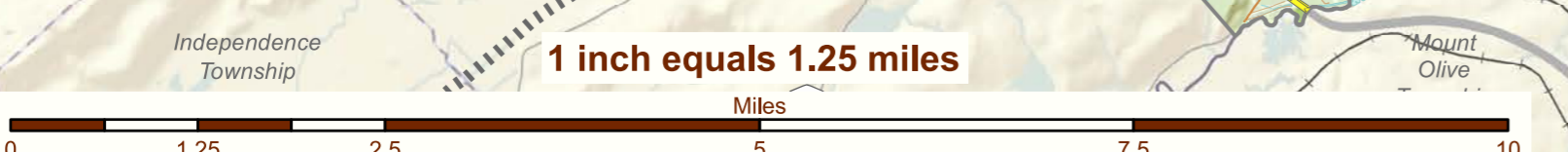
Map Legend

Trail Symbology	Railroad
Parking	Active Railroad
Restroom	Open Waters
Food Service	Stream
Caution	Lake
Visitor Center	Boundary
Landmark	Municipal Boundary
High Point Monument	Open Space
Trail System	Federal
Appalachian Trail	State
Great Valley Rail Trail	Non-Profit
Highlands Trail	Watershed
Ogden Mine Rail Trail	Municipal
Paulinskill Valley Rail Trail	1 High Point State Park
Sussex Branch Rail Trail	2 Hopatcong State Park
National Park Service Trail	3 Kittatinny Valley State Park
National Wildlife Refuge Trail	4 Stokes State Forest
State Park/ Forest Trail	5 Swartswood State Park
Municipal Trail	6 Wawayanda State Park
Historic Railroad	7 Delaware Water Gap National Recreation Area
Temporary Trail Route	
13.5 Mile trail loop (highlighted)	

County of Sussex
State of New Jersey

Computer Generated Mapping
Developed by Sussex County
Office of GIS

Map Revisions are as of April 2011



Liberty Water Gap Trail: A Trail Across New Jersey
One of the most unique trails in the United States... a trail that connects two national landmarks at each end, the Delaware Water Gap and the Statue of Liberty.

A 130 mile linear park that runs the width of New Jersey, showcasing its most interesting natural and historic heritage, using a connection of existing trails.

The Liberty Water Gap trail passes through Sussex County on the Sussex Branch Trail and continues onto the Paulinskill Trail out through Blairstown - highlighted in green.

For the complete 130 mile trail go to Libertygap.org

DELVAWE WATER GAP NATURAL RECREATION AREA - 67,000 acres
Address: 885 Womack Turnpike, Hewitt, NJ 07221
Phone: (973) 853-4452
Activities: Fishing, hunting, mountain biking, swimming, and picnicking. The 40 miles of the Middle Delaware River and 67,000 acres of river valley in New Jersey and New York.
Address: 1 Broad Street, Delaware Water Gap, PA 18227
Phone: (570) 422-6252. Visit Information

HAUPATONG STATE PARK - 159-acre park on Lake Hopatcong
Address: 6 Lakeside Blvd, Landing, NJ 07850
Phone: (973) 358-7010
Activities: Fishing, swimming, hiking, boating, and picnicking.
Address: 1 Coopers Road, Branchville, NJ 07826
Phone: (973) 948-2820
Activities: Fishing, hunting, hiking, boating, kayaking, mountain biking, and picnicking.
Address: 1091 E Shore Rd, Switzwood, NJ 07877
Phone: (973) 383-9230

KITTIMUNY VALLEY STATE PARK - 3,350 acres including Andover-Vanderkirk Airport, which is operated by the NJ Forest Service.
Address: 6 Lakeside Blvd, Landing, NJ 07850
Phone: (973) 358-7010
Activities: Fishing, hunting, hiking, boating, kayaking, mountain biking, and picnicking.
Address: 1 Coopers Road, Branchville, NJ 07826
Phone: (973) 948-2820
Activities: Fishing, hunting, hiking, boating, kayaking, mountain biking, and picnicking.
Address: 1091 E Shore Rd, Switzwood, NJ 07877
Phone: (973) 383-9230

State & Federal Parks located in Sussex County
For more information about the parks listed visit www.delaware.gov/departments/landmanagement
The capital building between Waterloo, Village and Albany is a 2 1/2 mile recreational trail open to the public for non-motorized activities. The trail part is a 2 1/2 mile trail in New Jersey and 2 1/2 miles of the trail is in New York. The trail is open to the public for non-motorized activities. The trail part is a 2 1/2 mile trail in New Jersey and 2 1/2 miles of the trail is in New York. The trail is open to the public for non-motorized activities.

Trail Focus: 200 miles of non-motorized trails in Sussex County, NJ. The trail is open to the public for non-motorized activities. The trail part is a 2 1/2 mile trail in New Jersey and 2 1/2 miles of the trail is in New York. The trail is open to the public for non-motorized activities.

Trail Focus: 200 miles of non-motorized trails in Sussex County, NJ. The trail is open to the public for non-motorized activities. The trail part is a 2 1/2 mile trail in New Jersey and 2 1/2 miles of the trail is in New York. The trail is open to the public for non-motorized activities.

Trail Focus: 200 miles of non-motorized trails in Sussex County, NJ. The trail is open to the public for non-motorized activities. The trail part is a 2 1/2 mile trail in New Jersey and 2 1/2 miles of the trail is in New York. The trail is open to the public for non-motorized activities.

Trail Focus: 200 miles of non-motorized trails in Sussex County, NJ. The trail is open to the public for non-motorized activities. The trail part is a 2 1/2 mile trail in New Jersey and 2 1/2 miles of the trail is in New York. The trail is open to the public for non-motorized activities.

Trail Focus: 200 miles of non-motorized trails in Sussex County, NJ. The trail is open to the public for non-motorized activities. The trail part is a 2 1/2 mile trail in New Jersey and 2 1/2 miles of the trail is in New York. The trail is open to the public for non-motorized activities.

Trail Focus: 200 miles of non-motorized trails in Sussex County, NJ. The trail is open to the public for non-motorized activities. The trail part is a 2 1/2 mile trail in New Jersey and 2 1/2 miles of the trail is in New York. The trail is open to the public for non-motorized activities.

Trail Focus: 200 miles of non-motorized trails in Sussex County, NJ. The trail is open to the public for non-motorized activities. The trail part is a 2 1/2 mile trail in New Jersey and 2 1/2 miles of the trail is in New York. The trail is open to the public for non-motorized activities.

Trail Focus: 200 miles of non-motorized trails in Sussex County, NJ. The trail is open to the public for non-motorized activities. The trail part is a 2 1/2 mile trail in New Jersey and 2 1/2 miles of the trail is in New York. The trail is open to the public for non-motorized activities.

Trail Focus: 200 miles of non-motorized trails in Sussex County, NJ. The trail is open to the public for non-motorized activities. The trail part is a 2 1/2 mile trail in New Jersey and 2 1/2 miles of the trail is in New York. The trail is open to the public for non-motorized activities.

Trail Focus: 200 miles of non-motorized trails in Sussex County, NJ. The trail is open to the public for non-motorized activities. The trail part is a 2 1/2 mile trail in New Jersey and 2 1/2 miles of the trail is in New York. The trail is open to the public for non-motorized activities.

Trail Focus: 200 miles of non-motorized trails in Sussex County, NJ. The trail is open to the public for non-motorized activities. The trail part is a 2 1/2 mile trail in New Jersey and 2 1/2 miles of the trail is in New York. The trail is open to the public for non-motorized activities.

Trail Focus: 200 miles of non-motorized trails in Sussex County, NJ. The trail is open to the public for non-motorized activities. The trail part is a 2 1/2 mile trail in New Jersey and 2 1/2 miles of the trail is in New York. The trail is open to the public for non-motorized activities.

Trail Focus: 200 miles of non-motorized trails in Sussex County, NJ. The trail is open to the public for non-motorized activities. The trail part is a 2 1/2 mile trail in New Jersey and 2 1/2 miles of the trail is in New York. The trail is open to the public for non-motorized activities.

Trail Focus: 200 miles of non-motorized trails in Sussex County, NJ. The trail is open to the public for non-motorized activities. The trail part is a 2 1/2 mile trail in New Jersey and 2 1/2 miles of the trail is in New York. The trail is open to the public for non-motorized activities.

Trail Focus: 200 miles of non-motorized trails in Sussex County, NJ. The trail is open to the public for non-motorized activities. The trail part is a 2 1/2 mile trail in New Jersey and 2 1/2 miles of the trail is in New York. The trail is open to the public for non-motorized activities.

Trail Focus: 200 miles of non-motorized trails in Sussex County, NJ. The trail is open to the public for non-motorized activities. The trail part is a 2 1/2 mile trail in New Jersey and 2 1/2 miles of the trail is in New York. The trail is open to the public for non-motorized activities.

Trail Focus: 200 miles of non-motorized trails in Sussex County, NJ. The trail is open to the public for non-motorized activities. The trail part is a 2 1/2 mile trail in New Jersey and 2 1/2 miles of the trail is in New York. The trail is open to the public for non-motorized activities.

Sussex County's Greenest County!

The Sussex Skylands, Sussex County, NJ, represents the most spectacular, non-season leisure and residential resort destination in the New York Metro area. The region is a beautiful mountain beauty and sweeping landscapes of northwestern New Jersey, coupled with an abundance of unsurpassed amenities.

Spata Trades
Interior Design & Remodeling Services
We are remodeling, lighting design and remodeling services in Sussex County, NJ. We do the entire project. We have on display at the moment for your kitchen or bathroom.
Phone: (973) 729-1171 • www.spata.com

Ecology Options
Energy Efficiency • Energy Efficient • Save Money
Make your home • Safe • Comfortable
NJ State Rebates available if qualified
www.ecologyoptions.com

Petier's Valley Craft Center
Phone: (973) 579-1811
www.sussexcounty.com

Businesses:

For a complete list of
Sussex County Chamber of Commerce Business Members
visit: www.sussexcounty.com

TransOptions
235 Delaware Ave, Suite 200 • Cedar Knolls, NJ 07922
Phone: (973) 267-7600 • Email: info@transoptions.com
TransOptions is a non-profit organization promoting the safe and efficient use of motorized transportation. Special emphasis is placed on cycling and walking in New Jersey's green areas.
TransOptions is a non-profit organization promoting the safe and efficient use of motorized transportation. Special emphasis is placed on cycling and walking in New Jersey's green areas.

SpinaTides Bathrooms and Kitchens
We are remodeling, lighting design and remodeling services in Sussex County, NJ. We do the entire project. We have on display at the moment for your kitchen or bathroom.
Phone: (973) 729-1171 • www.spata.com

Father John's Animal House
50 Father John's Lane • Ledgeville, NJ 07848
Phone: (973) 300-5909 • www.fatherjohns.com
Father John's Animal House is a non-profit organization focused on helping rescue dogs and cats find homes. Each animal receives a wellness exam, spay/neuter, and a rabby shot. We also provide adoption services and foster care.

Additional Trail Information

The 2000 mile Appalachian Trail extends from Georgia to Maine heads about 42 miles to the north of the Delaware Water Gap. The trail is open to the public for non-motorized activities. The trail part is a 2 1/2 mile trail in New Jersey and 2 1/2 miles of the trail is in New York. The trail is open to the public for non-motorized activities.

Trail Focus: 200 miles of non-motorized trails in Sussex County, NJ. The trail is open to the public for non-motorized activities. The trail part is a 2 1/2 mile trail in New Jersey and 2 1/2 miles of the trail is in New York. The trail is open to the public for non-motorized activities.

Liberty-Water Gap Trail-Emerging Route

Significant segments of the Liberty-Water Gap trail already connects to Columbia, NJ and the Delaware River. The trail is open to the public for non-motorized activities. The trail part is a 2 1/2 mile trail in New Jersey and 2 1/2 miles of the trail is in New York. The trail is open to the public for non-motorized activities.

Trail Focus: 200 miles of non-motorized trails in Sussex County, NJ. The trail is open to the public for non-motorized activities. The trail part is a 2 1/2 mile trail in New Jersey and 2 1/2 miles of the trail is in New York. The trail is open to the public for non-motorized activities.

Eastern Propane

Thank you to our sponsors & contributors:
Sussex County Chamber of Commerce
A publication of the
Sussex County Chamber of Commerce
Phone: (973) 327-5996

Liberty - Water Gap Trail

The Liberty-Water Gap trail is a very diverse emerging multi-use pathway from Liberty State Park on the Hudson River in Jersey City, New Jersey, to the Delaware Water Gap in Pennsylvania. The trail is open to the public for non-motorized activities. The trail part is a 2 1/2 mile trail in New Jersey and 2 1/2 miles of the trail is in New York. The trail is open to the public for non-motorized activities.

Trail Focus: 200 miles of non-motorized trails in Sussex County, NJ. The trail is open to the public for non-motorized activities. The trail part is a 2 1/2 mile trail in New Jersey and 2 1/2 miles of the trail is in New York. The trail is open to the public for non-motorized activities.

Take Time For YOU

The Sussex County YMCA supports a healthy lifestyle. According to the American Heart Association, research has shown the benefits of walking and moderate physical activity for at least 30 minutes a day can help you:
- Reduce the risk of coronary heart disease
- Improve blood pressure and blood sugar levels
- Improve blood lipid profile
- Maintain body weight and lower the risk of obesity
- Enhance mental well-being
- Reduce the risk of osteoporosis
- Stay healthier, feel stronger and live longer

Restaurants, B&B's, Resorts, Campgrounds & Businesses:

Chatterbox Drive-In
1 State Highway 15 (Corner of Rt. 15 and Rt. 206)
Augusta, NJ 07822
Phone: (973) 300-2300 • www.ChatterboxDriveIn.com
Family owned and operated, "American Graffiti" style eatery. Great menu featuring all your favorite "Shakes & Creams" named after local legends. Big Fun Local Secrets, Big Finds by Traveleasy. If you plan to use the Chatterbox Drive-In as your start/stop spot for using the trail, please park in the Park and Ride lot right next door. Open at 11:30 am - 10:00 pm 7 days a week.

Whistling Swan Inn Bed & Breakfast
110 Main Street • Stanhope, NJ 07874
Phone: (973) 347-6369 • www.whistlinginswann.com
The Whistling Swan Inn is an elegantly restored 1905 Victorian home. Relax and enjoy the hospitality and a plentiful warmth of a manor house refined over many years.

Kymer's Camping Resort
69 Kymer Road • Branchville, NJ 07826
Phone: (973) 875-3167 • www.njcamping.com
Enjoy the wonderful outdoors nestled in the Kittatinny Mountains. Whether you like the Appalachian Trail, canoe or just relax at our lake or stream. We have an Olympic-size swimming pool, there is something for everyone to enjoy. It's a great escape from the hustle and bustle of everyday life.

Krogh's Restaurant & Brew Pub
23 White Deer Pike, Lakeland Mohawk, Sparta NJ 07871
Phone: (973) 729-8426 • www.kroghs.com
Featuring our own, handcrafted brews - seasonal beers - starters - pizzas - salads - burgers - sandwiches - paninis - wraps - personal pizzas - full dinners - desserts - live entertainment Friday and Saturday nights.

Wooden Duck Bed & Breakfast
140 Goodale Road • Newton, NJ 07860
Phone: (973) 300-0395 • www.woodenduckinn.com
Lovely Bed & Breakfast in Northern NJ with 10 acres of woodlands directly on the Sussex Branch Trail (and we have bathrooms available). Family owned and operated, "American Graffiti" style eatery. Great menu featuring all your favorite "Shakes & Creams" named after local legends. Big Fun Local Secrets, Big Finds by Traveleasy. If you plan to use the Chatterbox Drive-In as your start/stop spot for using the trail, please park in the Park and Ride lot right next door. Open at 11:30 am - 10:00 pm 7 days a week.

Every Season is a Good Reason to Visit Sussex County, NJ

The Sussex Skylands represents the most spectacular four-season leisure and residential resort destination in the New York Metro area. The region offers the natural mountain beauty and sweeping landscapes of northwestern New Jersey, coupled with an abundance of unsurpassed amenities and attractions.

Call 973.579.1811 for your free vacation planning package or visit www.sussexskylands.com

Crystal Springs Resort
1 Wild Turkey Way • Hamburg, NJ 07419
Phone: (973) 827-5996 • www.crystalspringsresort.com
Enjoy extraordinary amenities at Crystal Springs Resort, including 2 luxurious hotels, 2 award-winning spas, 6 spectacular golf courses, 4-star dining, and a world-class wine cellar.

Mountain Creek Resort
200 RR #4 • Vernon, NJ 07462
Phone: (973) 827-2000 • www.mountaincreek.com
Mountain Creek, the New York Metro Area's closest major ski resort provides non-stop winter activity. Adventure-seekers find their very own winter getaway close to home with four mountain peaks with a 1,040-foot vertical, a top-rated Branch Park, and 100% night skiing and you can relax at the Tree Top Lodge. You can also find at Mountain Creek, America's largest tubing center, New Jersey's only Alpine Mountain Coaster and an eco-friendly ZipLine Adventure. The renowned Summer Waterpark and a new open-air lake open seasonally.

Delaware River Family Campground
100 Rt. 46 • Columbia, NJ 07832
Phone: (908) 475-4517 • www.njcamping.com/delaware
Experience the wonderful outdoors in the breathtaking Delaware Water Gap National Recreation area. Whether you take to the river in raft, kayak, canoe or tube, hike the Appalachian Trail or relax around the resort, there is something for everyone to enjoy.

Panther Lake Camping Resort
69 Kymer Road • Branchville, NJ 07826
Phone: (973) 347-4440 • www.njcamping.com/panther
Enjoy the wonderful outdoors across an 45-acre lake on 160 scenic acres, where there is something for everyone to enjoy. Whether you prefer swimming, boating, fishing or just relaxing on a sandy beach.

Garden of Life Massage & Yoga Center

211 Newton-Sparta Rd. • Andover, NJ 07821 • Phone: (973) 875-6555

Hay, Sussex County Trail Lovers, Enjoy more of life! Feel the difference of Garden of Life with Sussex County's best massage, yoga, pilates, boat therapy, & gift shop. Visit Once for the Experience - Return for the Results!

Sussex Bike & Sport Shop
2 Locations:
• 155 N Route 23 • Sussex, NJ 07461 • Phone: (973) 875-6555
• 231 Newton-Sparta Rd. • Andover, NJ 07821 • Phone: (973) 940-2453
We of Sussex Bike & Sport Shop are proud to be trusted by generations of cyclists from the tri-state area. Our 35 years of "Best in Class" service guarantees you the best ride and great place to grow into the sport. We service all brands of bikes and we are a Platinum level award-winning Trek bicycle dealer. Thank you for being part of our cycling community. We hope to serve you soon.

Trail Guide for Sussex County, NJ

Sussex Skylands
New Jersey's Great Northwest

Sussex Bike & Sport Shop
Minutes Away From Miles of Riding

Mountain Creek Resort
Non-stop winter activity. Adventure-seekers find their very own winter getaway close to home with four mountain peaks with a 1,040-foot vertical, a top-rated Branch Park, and 100% night skiing and you can relax at the Tree Top Lodge. You can also find at Mountain Creek, America's largest tubing center, New Jersey's only Alpine Mountain Coaster and an eco-friendly ZipLine Adventure. The renowned Summer Waterpark and a new open-air lake open seasonally.